

50 MAIN STREET 11 MARTINE AVE



CITY SQUARE

**THE CENTER OF
COLLABORATION
AND CULTURE**

RMF
OFFICE

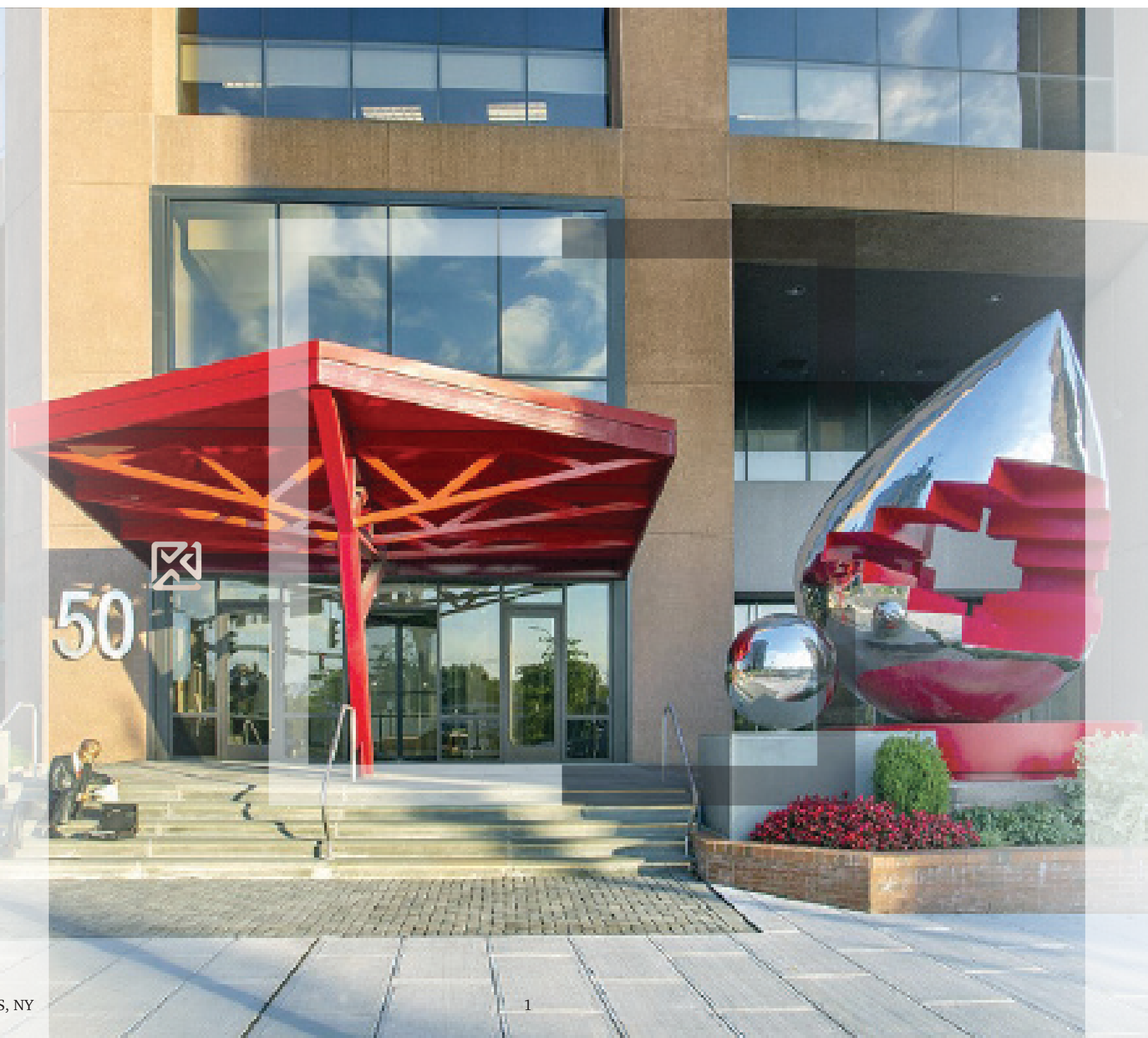
GDC

LIVE. WORK. PLAY.

EXPERIENCE THE EXTRAORDINARY TRANSFORMATION AT CITY SQUARE

The iconic Westchester Financial Center was a landmark at the entryway to downtown White Plains for many years. This unique mixed-use complex has undergone an unparalleled modernization and is attracting top businesses and residents from all over the country.

Merging the amenities, culture, and conveniences of a bustling city with a spectacular two-acre park, City Square has significantly transformed the White Plains downtown landscape.



IN THE CENTER OF EVERYTHING

50 MAIN STREET

The impressive sculpture at its entry, a beautiful new art-inspired lobby and art gallery create the atmosphere of culture and sophistication not commonly located at a typical White Plains address.

The mezzanine level features amenities not found in any other building in Westchester County. These include: a fully modernized cafeteria with outdoor dining, a state-of-the-art fitness center, a golf simulator, an art gallery lounge, and a club game room. In addition, executives and employees enjoy access to a lecture hall & training room, private dining/conference room, and an executive board room.

11 MARTINE AVENUE

The top three floors of 11 Martine are penthouse office suites with a private elevator and private terrace. This unique office space offers breathtaking views of Westchester from an abundance of windows and small floor plates.



CONVENIENCE

THE **ONLY** WHITE PLAINS OFFICE ADDRESS THAT HAS IT ALL

From a front desk concierge in the well-appointed lobby to complimentary WiFi in all public spaces and a multi-level direct access covered parking garage for visitors and employees—City Square has set a new standard of excellence in the White Plains office market.

24/7 SECURITY

Keycard controlled access with roving security patrol and CCTV offer visitors and employees confidence of a safe and secure environment in which to thrive.



LOBBY



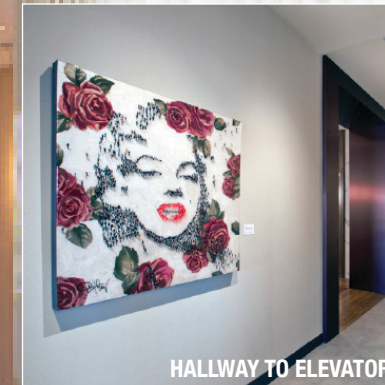
CITY SQUARE 50 MAIN ST. | 11 MARTINE AVE | WHITE PLAINS, NY



GALLERY LOBBY

THE **ONLY** WHITE PLAINS OFFICE ADDRESS WITH ITS OWN ART GALLERY

The 50 Main Street Art Gallery and lounge is curated by Arts Westchester that features paintings and sculptures from both local and national artists.



HALLWAY TO ELEVATOR

CULTURAL

A MEMORABLE EXPERIENCE

The art gallery and lobby area is a perfect setting for a corporate party or event.



GALLERY ART

COLLABORATIVE

THE **ONLY** WHITE PLAINS OFFICE ADDRESS WITH EIGHT CORNER OFFICES PER FLOOR

Newly renovated, generously windowed light and bright office space with stunning views were expressly designed to accommodate any business. Spacious, well-appointed executive conference, board, and meeting rooms offer privacy and convenience.



Lobby lounges are stylish and comfortable and there is a cafe that is open daily for breakfast and lunch to enjoy both indoor and outdoor dining.

Medi, a Mediterranean Bistro, is scheduled to open Fall 2022 as well as additional retail and restaurants in Mid-2023.



TWO-ACRE PARK



THE **ONLY** WHITE PLAINS OFFICE ADDRESS WITH ITS OWN PUTTING GREEN AND BOCCE COURT

Superior amenities are an integral component of a successful work-life balance environment and are widely incorporated at City Square.



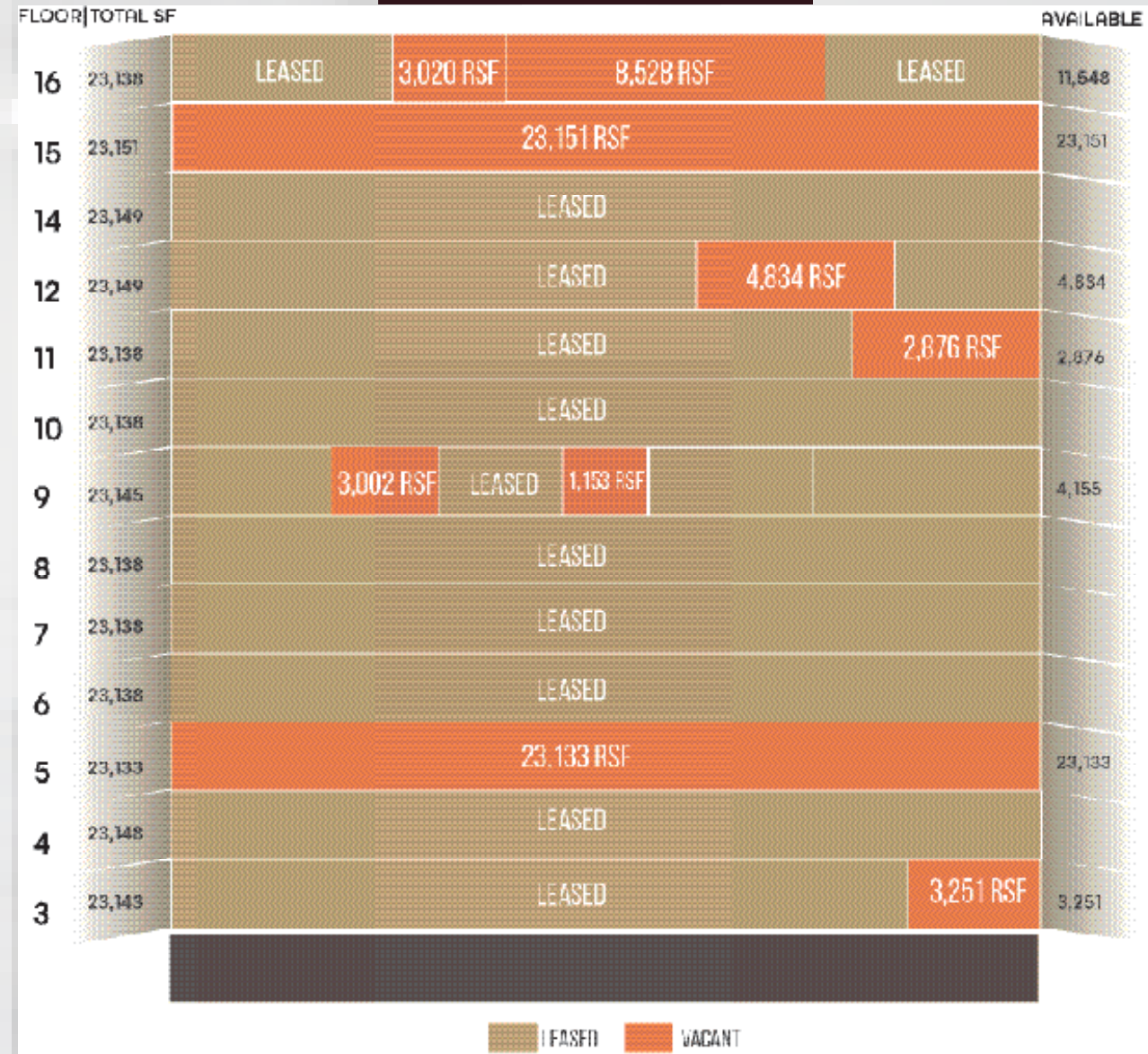
COMMUNITY



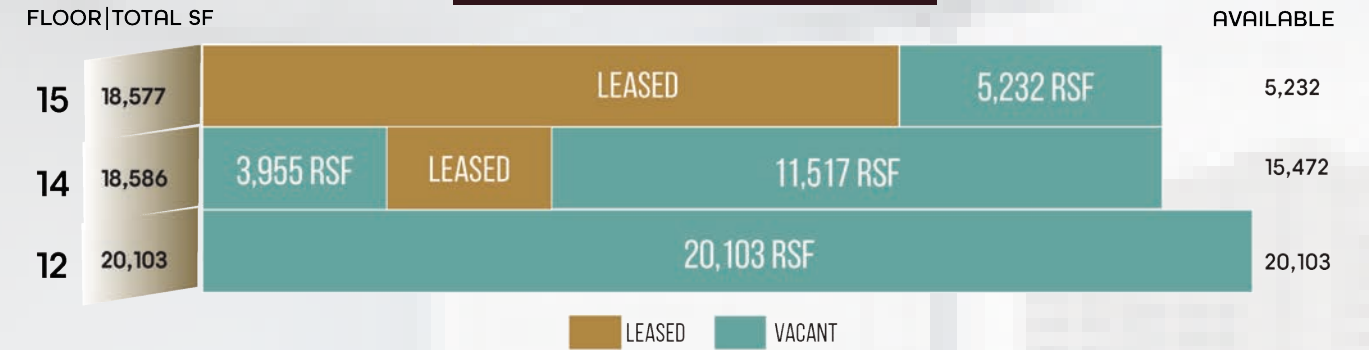
City Square has created unique outdoor and indoor recreation areas including a game room, dog-walking park, putting green, and hidden golf driver setup to both excite and invigorate. These amenities create an environment that employees want to come back to.

AVAILABILITY

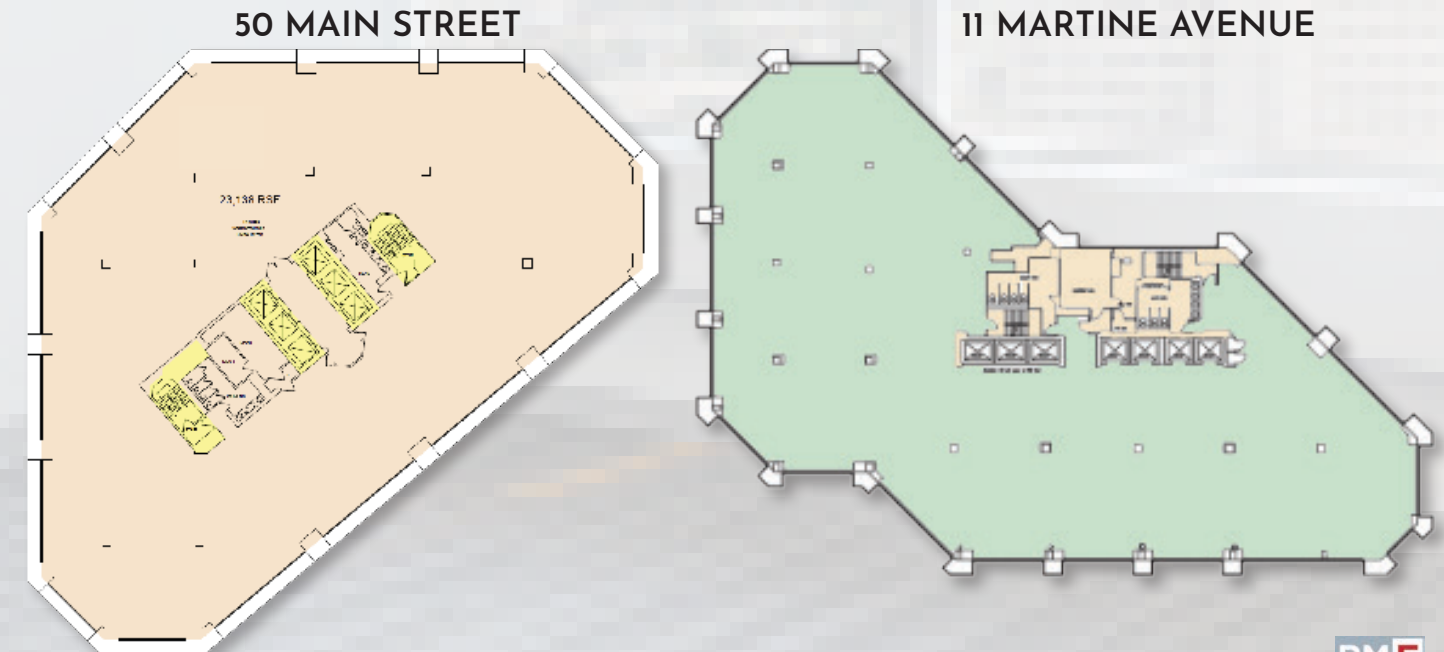
50 MAIN STREET



11 MARTINE AVENUE



Typical Floor Plans



AREA MAP

100+ restaurants, bars and cafes with a wide range of cuisines

7 minutes away from the Cross Westchester Expressway (I-287)

35 minutes to Manhattan on the Metro North Railroad

3K of existing residential units with thousands more in development

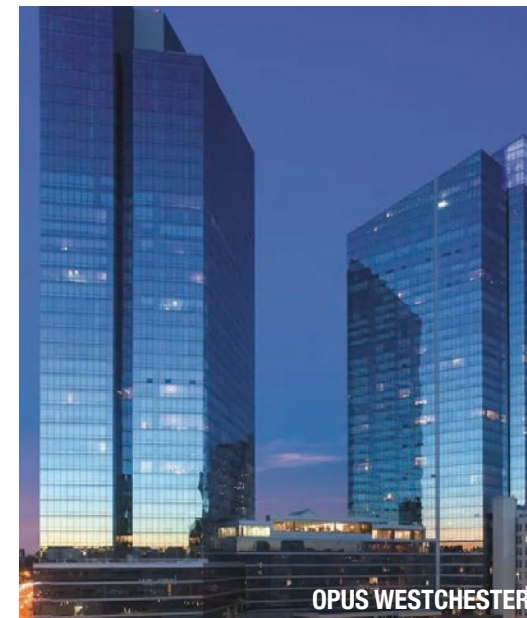
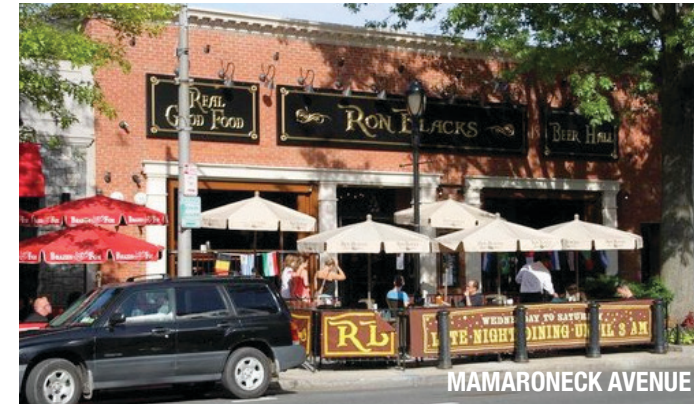


- CORPORATE NEIGHBORS
- DINING & CAFES
- SHOPPING
- HOTELS
- PUBLIC SERVICES
- EDUCATION



CITY SQUARE 50 MAIN ST. | 11 MARTINE AVE | WHITE PLAINS, NY

NEIGHBORHOOD HIGHLIGHTS



City Square is conveniently located in the heart of White Plains and is steps away from great restaurants, hotels with conference facilities and award-winning shopping. Surrounded by thousands of residential units, City Square is a short walk from the Federal District Courthouse, Westchester County Courthouse, public library and recreational facilities.

This prime gateway location is just steps to the White Plains Metro-North train station which offers a 35-minute express ride to Grand Central Station. There is also regional and local bus service nearby at the newly renovated White Plains Transportation Center as well as quick access to the Bronx River Parkway, I-287, and I-87 and the regional highway network. Westchester County Airport is 15 minutes from the property.



CITY SQUARE

WHITE PLAINS



CONTACT EXCLUSIVE AGENTS:

CHRIS O'CALLAGHAN
914.968.8500 X 342

COCALLAGHAN@RMFRIEDLAND.COM

ROBERT TAYLOR
914.968.8500 X 341

RTAYLOR@RMFRIEDLAND.COM

JILLIAN REINER
914.968.8500 X 343

JREINER@RMFRIEDLAND.COM

REED WAGGONER
914.968.8500 X 366

RWAGGONER@RMFRIEDLAND.COM

WWW.CITYSQUAREWHITEPLAINS.COM

NEW YORK | CONNECTICUT | RMFRIEDLAND.COM | 914.968.8500

All information contained herein is based upon information which we consider reliable, but because it has been supplied by third parties, we cannot represent that it is accurate or complete, and it should not be relied upon as such. The offerings are subject to errors, omissions, changes, including price, or withdrawal without notice. The content is provided without warranties of any kind, either express or implied. RM Friedland, LLC, its agents or employees shall not be held liable to anyone for any errors, omissions or inaccuracies under any circumstances. You and your advisors should conduct a careful, independent examination of the property to determine to your satisfaction the suitability of the property for your needs.